

**THE CANEY VALLEY ELECTRIC
 COOPERATIVE ASSOCIATION, INC.**

TheVoice



Caney Valley Electric Co-op, Inc.

Board of Trustees

Kenneth Bates
 President

Steve Clark
 Vice President

Chris Kelly
 Secretary/Treasurer

David Evans
 Trustee

Dan Hubert
 Trustee

Don Land
 Trustee

Charles McMillan
 Trustee

Stephanie Ollenborger
 Trustee

Dale Steward
 Trustee

Contact Us

401 Lawrence, P.O. Box 308
 Cedar Vale, KS 67024
 620-758-2262, Fax: 620-758-2926
 cve@caneyvalley.com

Office Hours

Monday - Friday, 8 a.m. to 4:30 p.m.

Power Cost Adjustment

The Power Cost Adjustment (PCA) for February is (\$0.01837)/kilowatt-hour. This amounts to a credit of \$18.37 per 1,000 kilowatt-hours. The PCA was implemented in 2002 to cover only the increase (or decrease) in power costs (over and above 7¢/kWh) charged to us by our wholesale power supplier, Kansas Electric Power Cooperative (KEPCo) in Topeka. The PCA varies each month depending on the wholesale charges from KEPCo, and is a flow-through on your electric bill.

FROM THE GENERAL MANAGER

Mark Your Calendar for March 12

Make plans to attend the cooperative's annual meeting on Thursday, March 12, at the Cedar Vale school gymnasium. Cooperative members and their families can enjoy a hamburger supper served from 5-6:30 p.m. Musical entertainment will be provided during the supper and member registration process.

Registration favors, including an electric bill discount certificate, will be given away along with chances to win one of many prizes.

The meeting will include business reports about your cooperative's operations and financial condition.

A very important part of the meeting is the election of three trustees for the board. The board positions to be filled and the current members in these positions are: District 1, Position 2, **DON LAND**, Cedar Vale; District 2, Position 2, **DAVID EVANS**, Howard; and District 3, Position 2, **DAN HUBERT**, Sedan.

A board-appointed nominating committee will meet to nominate candidates for the new three-year positions. The candidates will be considered for

election at the meeting along with any members nominated from the floor at the meeting.

The nominees for board trustee are to be commended for being willing to offer their time and commitment to the governance of the cooperative's operations.

Mark your calendar today, and we hope to see you at the meeting!

Allen A Zadorozny, General Manager

March 2020						
S	M	T	W	U	F	S
1	2	3	4	5	6	7
8	9	10	11	12	13	14
15	16	17	18	19	20	21
22	23	24	25	26	27	28
29	30	31				

Trustee Terms Expiring in 2020

DISTRICT 1	DISTRICT 2	DISTRICT 3
DON LAND	DAVID EVANS	DAN HUBERT
Cedar Vale	Howard	Sedan

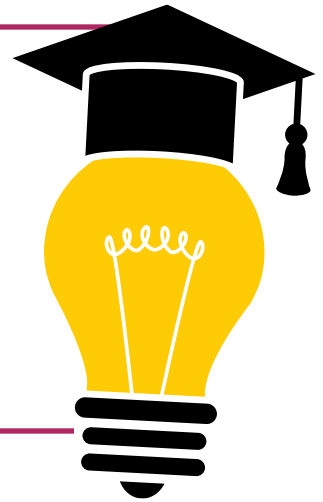
ATTENTION HIGH SCHOOL SENIORS

Scholarships Now Available

Apply by Feb. 20, 2020

Caney Valley Electric Cooperative has scholarships available for high school seniors continuing their education in college or at a vocational-technical school.

Application deadline for August enrollment is **FEB. 20, 2020**. Please contact Caney Valley Electric or your high school counselor for more information. Award recipients will be announced at our annual meeting **MARCH 12, 2020**.



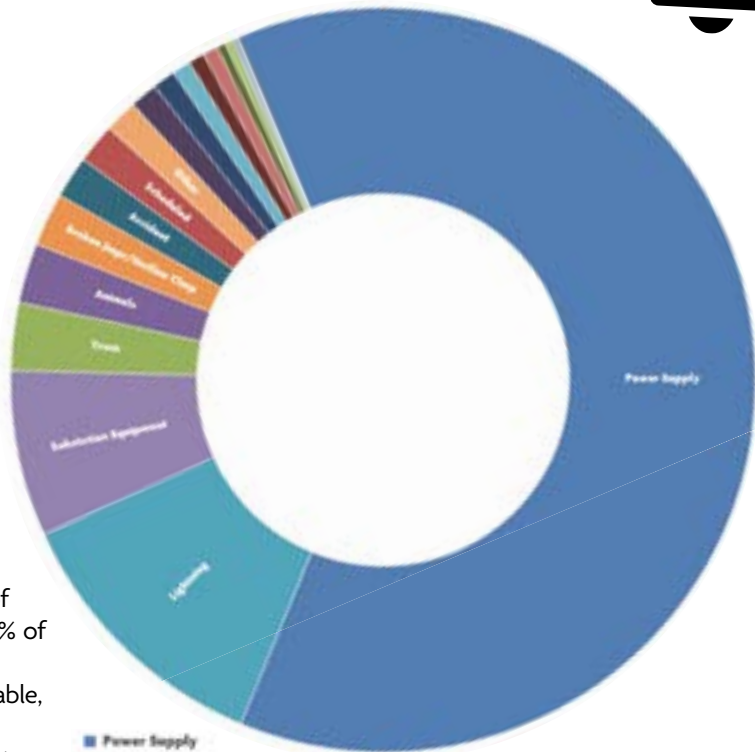
2019 Annual Outage Summary

As you can see by the reference chart, the outages experienced by Caney Valley members totaled an average of 5.88 hours per meter.

The majority of the outages were due to our power supplier being off, which directly affects our lines. Substation equipment issues, lightning and trees interfering with lines contributed to most of the remainder of the outages, with those four being almost 85% of the total outages.

Caney Valley Electric strives to provide reliable, continuous electric service to all of our consumer-members, and we have an excellent record we continually try to improve on. However, we cannot guarantee continuity of service 100% of the time, and some outages must be expected.

We intend to keep doing our best to prevent service interruptions to our members.



- Power Supply
- Scheduled
- Trees
- Animals
- Lightning
- Broken Jumper/Hotline Clamp
- OCK (Line Breaker Reset)
- Shortening Line Pole
- Transformer, Failure
- Transformer, Fuse
- Storm/Major Outage Event
- Accident
- On Consumer's Side
- Secondary Pole Brks.
- Secondary Conductor
- Pri Conductor
- Primary UG
- Substation Equipment
- Transm 69KV
- Pole Inval./Deadend Bolts

Outage Reference by Year

Year	Total Hours Off	Avg. Hours	Reference	Year	Total Hours Off	Avg. Hours	Reference	Year	Total Hours Off	Avg. Hours	Reference
2019	31,145.08	5.88		2013	50,833.35	9.12	Storms Feb & May	2007	27,727.75	5.16	
2018	19,335.83	3.61		2012	27,320.08	4.89		2006	21,901.00	4.19	
2017	27,990.37	5.19		2011	20,035.76	3.59		2005	89,467.50	17.12	Ice Storm 1/4/05
2016	23,599.25	4.37		2010	20,966.95	3.79		2004	21,890.50	4.21	
2015	72,264.55	13.15	Ice Storm 12/27/15	2009	94,381.25	17.12	Ice Storm 3/28/09	2003	13,728.25	2.63	Ice Storm 1/30/02
2014	28,662.18	5.14		2008	18,145.10	3.33		2002	60,387.25	116.49	

HELP KEEP LINEWORKERS SAFE



Lineworkers take great pride in providing safe and reliable service, but they depend on you to keep them safe. Remember to move over when you see a utility vehicle pulled over, and never affix signs to electrical poles.

Do Your Part to Keep Lineworkers Safe

Think about how often you have experienced one of these scenarios:

- ▶ It's nearing 5 p.m. on a workday. Your boss wanted that last-minute report and your children need to be picked up from soccer or play practice. You jump in your car and on the way you approach a work zone. You don't have time to slow down properly so you rush through it, ignoring the orange work zone signs.
- ▶ You're having a garage sale and you think posting a sign on a utility pole won't hurt. Everyone does it, right? Wrong. Either of these situations could injure or kill one of Caney Valley Electric's lineworkers.

The job of an electric lineworker is not easy. Lineworkers take great pride in providing safe and reliable service, but their job involves working on and around live power and often in the tough elements of winter and spring storms. We ask you to do your part to keep them safe:

- ▶ Slow down and move over in work zones. Vehicles going too fast endanger workers on the ground. Driving too fast or not moving over can also put a lineworker who is working high up in a bucket in danger by causing the utility vehicle to move or sway.
- ▶ Do not post anything on a utility pole, especially with staples, nails or tacks. These can puncture insulated gloves or other protective clothing and expose workers to high voltages.
- ▶ Never plug a generator into an indoor or outdoor wall outlet. The power that backfeeds into the electric line could electrocute a utility worker. Contact Caney Valley to learn how to properly use your generator.
- ▶ Please be patient when the power goes out. Lineworkers restore power as efficiently and safely as possible.

We appreciate your help in keeping our employees safe. For questions about employee safety, call 620-758-2262.

Statement of Nondiscrimination

This institution is an equal opportunity provider and employer. If you wish to file a Civil Rights program complaint of discrimination, complete the USDA Program Discrimination Complaint Form found online at www.ascr.usda.gov/complaint_filing_cust.html or at any USDA office, or call 866-632-9992 to request the form. You may also write a letter containing all of the information requested in the form. Send your completed complaint form or letter by mail to U.S. Department of Agriculture, Director, Office of Adjudication, 1400 Independence Avenue, S.W., Washington, D.C., 20250-9410, by fax 202-690-7442 or email at program.intake@usda.gov.

4 Tips for Winter Safety

It's no surprise that winter months bring the increased potential for fire risks and electrical safety hazards. During the coldest months, individuals are using additional electrical devices and appliances, like space heaters, electric blankets and portable generators along with cooking inside more often.

The National Fire Protection Association estimates 47,700 home fires occur each year in the U.S. due to electrical failure or malfunction. These fires result in 418 deaths, 1,570 injuries and \$1.4 billion in property damage annually. This winter, safeguard your loved ones and your home with these electrical safety tips from Electrical Safety Foundation International.

DON'T OVERLOAD OUTLETS. Overloaded outlets are a major cause of residential fires. Avoid using extension cords or multi-outlet converters for appliance connections — they should be plugged directly into a wall outlet. If you're relying heavily on extension cords in general, you may need additional outlets to address your needs. Contact a qualified electrician to inspect your home and add new outlets.

NEVER LEAVE SPACE HEATERS UNATTENDED. If you're using a space heater, turn it off before leaving the room. Make sure heaters are placed at least 3 feet away from flammable items. It should also be noted space heaters take a toll on your energy bills. Space heaters should be used to warm up small spaces like a bedroom or office. If you're using them throughout your home, it may be time to upgrade your home heating system.

INSPECT HEATING PADS AND ELECTRIC BLANKETS. These items cause nearly 500 fires every year. Electric blankets more than 10 years old create additional risks for a fire hazard. Inspect your electric blankets and heating pads — look for dark, charred or frayed spots, and make sure the electrical cord is not damaged. Do not place any items on top of a heating pad or electric blanket, and never fold them when in use.

USE PORTABLE GENERATORS SAFELY.

Unfortunately, winter storms can cause prolonged power outages, which means many consumers will use portable generators to power their homes. Never connect a standby generator into your home's electrical system. For portable generators, plug appliances directly into the outlet provided on the generator. Start the generator first, before you plug in appliances. Run it in a well-ventilated area outside your home. The carbon monoxide it generates is deadly, so keep it away from your garage, doors, windows and vents.

What Do Squirrels, Birds and Snakes Have in Common?

Besides being cute, fun to watch, or just plain slithery, animals can disrupt power.

Although we do all we can to prevent animal interference by using equipment guards, anti-roosting devices or other animal-friendly deterrents, sometimes our efforts are no match for persistent and curious critters who use overhead power lines as a superhighway or substations as a nesting ground.

According to the Electrical Engineering Portal (EEP), the following classes of animals have caused shorts and subsequent power outages or service disruptions:

▶ **SQUIRRELS LOVE TO USE POWER LINES AS THEIR OVERHEAD HIGHWAY.**

They are agile and crafty — oftentimes equipment guards and other deterrents cannot keep them away, much like a squirrel outsmarting a bird feeder. If they touch the power line and pole (or other equipment) simultaneously, the electric current travels through them and their demise can cause problems with power transmission.



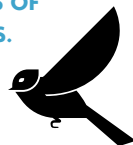
▶ **MICE, RATS AND GOPHERS (OH MY!) SOMETIMES CAUSE INTERRUPTIONS IN SERVICE BY GNAWING THROUGH UNDERGROUND CABLES.**

These offenders (and others) can also try to make a home in a substation, which often does not turn out well for them and can cause a hiccup in power distribution for us.



▶ **BIRDS CAN CAUSE DIFFERENT TYPES OF PROBLEMS BASED ON THEIR SPECIES.**

Although small birds can sit on a wire without a problem, some larger varieties like to build nests at the tops of poles, on transmission towers and in substations. Nesting material can cause faults (abnormal electric currents), and bird droppings can contaminate insulators, according to EEP. Other times, large birds with



long wing spans can touch a live power line with one wing tip and something else with the other and become a conductor for the voltage to pass through them. This is called “bridging.”

▶ **SNAKES CAN DISRUPT SERVICE IN BOTH SUBSTATIONS AND UNDERGROUND.**

They can squeeze through small spaces, travel upward, and have enough length to bridge from one current to another, causing a problem.



▶ **FIRE ANTS ARE ORIGINALLY FROM SOUTH AMERICA.**

They have migrated to the southern United States and they like to build nests in pad-mounted transformer cabinets. Their presence can cause short circuits and they can eat conductor insulation. They can also make it a challenge to maintain equipment.



▶ **LARGE ANIMALS LIKE CATTLE, HORSES, BISON AND BEARS CAN CAUSE DAMAGE TO GUY WIRES AND POLES.**

They can cause physical damage and cause an outage or make the system more prone to outages in the future. Feisty bears can climb wooden utility poles and make contact with live conductors.



Caney Valley's Operating Statistics

For Month Ending	Nov. 2019	Nov. 2018
Meters Billed	5,289	5,328
kWh Purchased	5,174,880	5,317,599
Cost per kWh	0.06418	0.06363
kWh Sold	4,284,145	4,269,923
Total Revenue	\$ 718,116	\$ 725,389
Purchased Power	\$ 333,043	\$ 338,990
Operating Expenses	\$ 200,169	\$ 184,781
Depreciation Expenses	\$ 68,144	\$ 67,314
Interest Expenses	\$ 49,584	\$ 46,779
Other Expenses	\$ 40	\$ 547
Operating Margins	\$ 67,137	\$ 86,978
Non-Operating Margins	\$ 1,979	\$ 1,976
Total Margins	\$ 69,117	\$ 88,954
Margins Year-to-Date	\$ 556,261	\$ 522,045

Outages for December 2019

Occasionally, a part or parts of the delivery system fail and an outage occurs. Following are the larger outages that occurred in December.

Date	Area	Members Affected	Duration	Cause
12/10	Burden Meter Point	48	1 hr 15 min	Broken jumper
12/26	Silverdale substation	172	1 hr 10 min	Eergy off